

WASHER SERIES DRYER SERIES

WASHING MACHINE 15/20/25kg

DRYER SERIES 15/20/25kg



ChenXiong Mac-Elec Co., Ltd

Address: 11F No.16 North Jiefang Road, Wuxi, Jiangsu, P.R. China

Zip code : 214003

Tel: +86-510-82761963

E-mail: Gang.chen@chenghsiung.com

Fax: +86-510-82726695

CATALOGS

CATLOGS



03 STANDARD WASHER
(15/20/25 KG)

07 PROFESSIONAL WASHER
(15/20/25 KG)

13 DRYER SERIES
(15/20/25 KG)



WASHER

01

STANDARD WASHER

15kg

20kg

25kg



laundry
systems

TECHNICAL FEATURES



Suspension Spring Shock Absorber Design

Ultra-low vibration, equipped with German brand dampers, capable of working on any floor without a separate foundation.



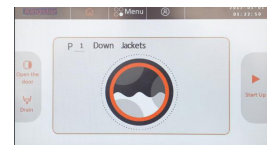
304 Stainless Steel Construction

The inner drum, outer cylinder, and all water-contacting parts are made of 304 stainless steel, ensuring no rust and no impact on washing quality or risk of accidents.

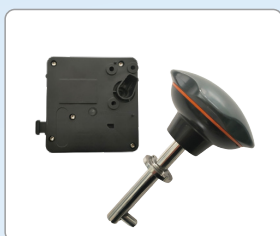


10-inch HD full-color LCD screen

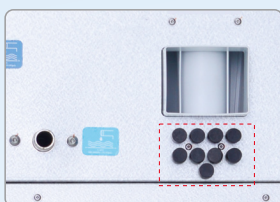
Allows for free programming or one-touch washing, simple and easy to operate.



TECHNICAL FEATURES



Electronic Door Lock Design



Optional Automatic Dosing System



Electronic Door Lock Design

Controlled by computer programs, the door can only be opened after the high-speed extraction completely stops, effectively avoiding safety accidents.



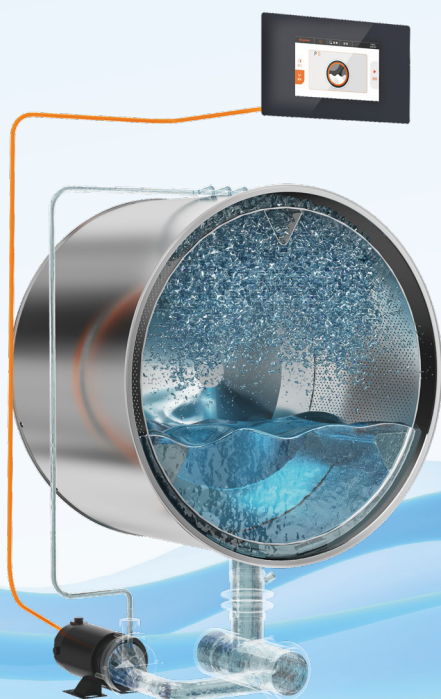
Intelligent Weighing Design

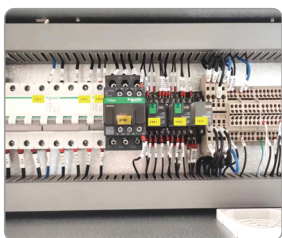
Automatically adjusts water volume based on the weight of the clothes, greatly saving heating costs and washing chemical costs while ensuring washing quality.



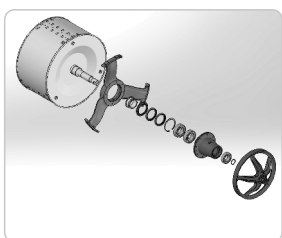
Optional Automatic Dosing System

Open signal interface for any brand of dispenser, allowing precise chemical dosing, reducing waste, saving labor, and ensuring more stable washing quality.





Imported Electrical Components



Main Transmission Uses Three-Bearing Design



High-Speed Extraction

Designed with a 300G extraction rate, the main motor is custom-made by a listed company, providing excellent performance, high extraction rate, and reduced drying time, effectively saving energy.



Imported Electrical Components

All electrical components are imported brands, with bearings from USA TWB, contactors from French Schneider, and all wires and plugs being imported brands.



Main Transmission Uses Three-Bearing Design

High strength, ensuring 10 years of maintenance-free operation.



Long-Life Design

The entire machine is designed for a 20-year lifespan

TECHNICAL PARAMETERS



Specification Model	SHS-2015	SHS-2020	SHS-2025
Operating Voltage (V/P/Hz)	380/3/50	380/3/50	380/3/50
Washing Capacity (kg)	8~15	8~20	8~25
Drum Volume (L)	150	200	250
Washing/Spinning Speed (rpm)	30~910	30~850	30~850
Transmission Power (kw)	1.5	3	3
Electric Heating Power (kw)	12	18	18
Noise (db)	≤70	≤70	≤70
Extraction Factor (G)	300	300	300
Automatic Dosing Ports (ways)	9	9	9
Steam Pressure (MPa)	/	0.2~0.4	0.2~0.4
Inlet Water Pressure (MPa)	0.2~0.4	0.2~0.4	0.2~0.4
Inlet Pipe Diameter (mm)	DN20	DN20	DN20
Hot Water Pipe Diameter (mm)	/	DN20	DN20
Drain Pipe Diameter (mm)	Φ76	Φ76	Φ76
Inner Drum Diameter × Depth (mm)	Φ650×465	Φ750×410	Φ750×566
Overall Dimensions (mm)	800×1100×1300	978×932×1458	978×1088×1458
Total Weight (kg)	328	464	478

02

PROFESSIONAL WASHER (WET CLEANING WASHER)

15kg

20kg

25kg

WASHER



TECHNICAL FEATURES



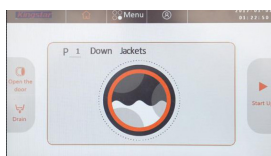
INTELLIGENT WASHING AND CARE

15 rpm
Minimum
rotation speed

70⁺
sets
Customizable
washing programs

12.1 inches
Full LCD
touchscreen

Ensures Safer Washing

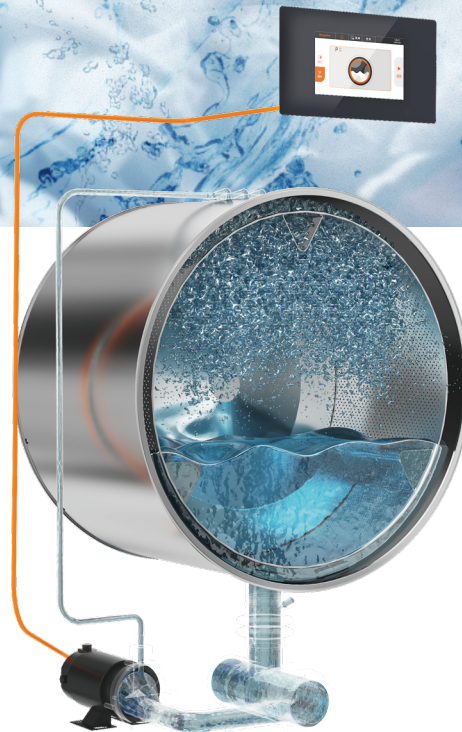


- 1 Intelligent washing system developed by professional software engineers and experienced laundry masters from Taiwan, setting optimal washing speeds and stop/rotation ratios for different fabric types to achieve the best washing power without damaging clothes.
- 2 Minimum speed of 10 rpm, suitable for high-end fabrics like silk, wool, and cashmere.
- 3 Capable of programming over 70 washing programs, with custom programs transferrable between devices. Features a 12.1-inch full LCD touch screen, simple operation, automatic chemical dosing, and one-touch completion of the entire washing process.
- 4 Personalized settings for each washing program based on fabric characteristics, including main wash speed, high-speed extraction speed, time, and temperature, ensuring garment safety.
- 5 The junction between the inner drum and outer cylinder is designed with rolled edges, with a gap of 4-6mm, smaller than similar products from Europe and the US. The door adopts a convex glass design, keeping clothes away from the loading port to avoid damage from zippers and buttons getting caught.
- 6 The inner drum, outer cylinder, and all water-contacting parts are made of 304 stainless steel, ensuring no rust and no impact on washing quality or risk of accidents.



REFINED INNER DRUM AND SPRINKLING SYSTEM

Cleaner Washing



304

Stainless Steel
Inner Drum and Outer
Cylinder Material

3_{mm}

Inner Drum Mesh Hole

The inner drum and outer cylinder of the wet cleaning washer are made entirely of 304 stainless steel, with a thickness greater than similar machines from Europe and the US. The inner drum is manufactured using mold technology and specialized Italian equipment, resulting in a seamless, beautiful, durable design.

The inner drum mesh adopts a diamond surface design with a 3mm hole diameter, increasing the friction surface of the clothes to effectively avoid damage and enhance the cleanliness of the clothes.

Equipped with a sprinkling system to effectively filter lint and achieve cleaner washing.



INTELLIGENT WEIGHING AND HIGH EXTRACTION FACTOR

Lower Washing Costs

The intelligent weighing system adjusts water, chemical, and steam volumes based on the actual weight of the clothes, saving water, electricity, steam, and chemical costs while ensuring stable washing quality.

The extraction factor is designed at 400G, preventing water spots when washing down jackets and significantly reducing drying time, effectively lowering energy costs.

400G
G-force Design



OPTIMIZED DESIGN FOR HIGHER WASHING EFFICIENCY

Higher Washing Efficiency

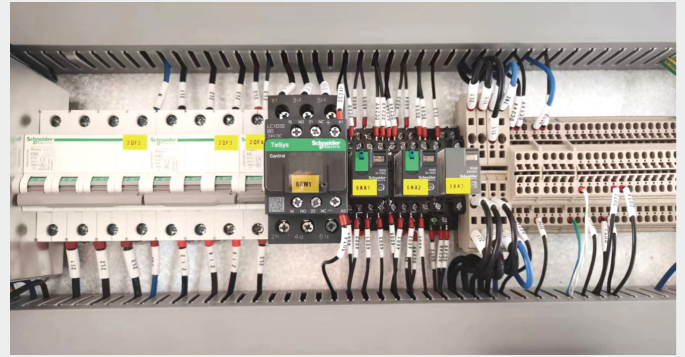
The wet cleaning washer series has 22 optimized designs compared to standard washers on the market, including automation, washing process, mechanical tumble force, surface friction, liquid detergent, and drainage, resulting in higher washing efficiency and greater value creation.

22
Optimized Design
Features



IMPORTED COMPONENTS FOR MORE STABLE QUALITY

Product Stability

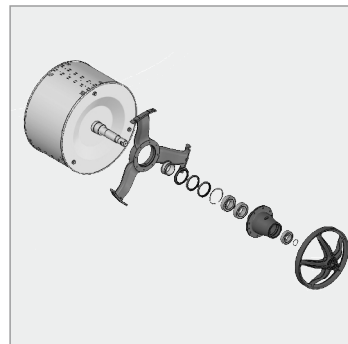


The main motor is custom-made by a listed company in China, with bearings from the US TWB, circuit breakers, contactors, and relays from French Schneider, and all wires, plugs, and fasteners being imported brands, ensuring overall machine quality and product stability.



LONG-LIFE DESIGN WITH A 2-YEAR WARRANTY

Better Durability



5

years

no need to replace
bearing seals

20

years

lifespan

- 1 The frame structure uses a weld-free process, ensuring high structural strength and stability, avoiding large stress deformation due to welding.
- 2 The intelligent extraction design ensures low vibration, low noise, and good stability during high-speed extraction, with a long service life.
- 3 The main transmission uses a three-bearing design, with bearings and oil seals from imported brands, ensuring high strength and maintenance-free operation for 5 years without needing to replace the bearings or oil seals.
- 4 The entire machine is designed for a 20-year lifespan



TECHNICAL PARAMETERS



Specification Model	SHS-2015P	SHS-2020P	SHS-2025P
Operating Voltage (V/P/Hz)	380/3/50	380/3/50	380/3/50
Washing Capacity (kg)	8~15	8~20	8~25
Drum Volume (L)	150	203	250
Washing/Spinning Speed (rpm)	15~910	15~980	15~980
Transmission Power (kw)	1.5	2.2	3
Electric Heating Power (kw)	12	18	18
Noise (db)	≤70	≤70	≤70
Extraction Factor (G)	400	400	400
Automatic Dosing Ports (ways)	9	9	9
Steam Pressure (MPa)	0.2~0.4	0.2~0.4	0.2~0.4
Inlet Water Pressure (MPa)	0.2~0.4	0.2~0.4	0.2~0.4
Steam Pipe Diameter (mm)	/	/	DN15
Inlet Pipe Diameter (mm)	DN20	DN20	DN20
Hot Water Pipe Diameter (mm)	DN20	DN20	DN20
Drain Pipe Diameter (mm)	Φ76	Φ76	Φ76
Inner Drum Diameter × Depth (mm)	Φ650×465	Φ750×457	Φ750×566
Overall Dimensions (mm)	800×1077×1429	978×932×1458	978×1088×1458



DRYER SERIES

15kg

20kg

25kg



LAUNDRY SYSTEMS

TECHNICAL FEATURES

99

Built-in automatic programs

10 inches

HD touchscreen

3

Heating methods



- 1** Advanced Intelligent Drying System: Equipped with a 10-inch full-color HD touchscreen, it includes 99 built-in editable automatic programs, allowing selection based on different clothes and linens.
- 2** Loading Capacity Design: Designed with a 1:18 loading capacity ratio, the inner drum is made of 304 stainless steel material with a large door design, making it convenient for loading and unloading clothes.
- 3** High-Power Heating Design: Features a high-power heating system with an added insulation layer on the outer cylinder, ensuring quick temperature rise, good insulation effect, and improved drying efficiency.
- 4** Imported Electrical Components: All electrical components are imported brands, including Mitsubishi inverters, Schneider contactors, and all wires, plugs, and bearings are also imported brands.
- 5** Multiple Heating Methods: Offers three heating methods: steam heating, electric heating, and gas heating.

TECHNICAL PARAMETERS



Specification Model	SDR-2015	SDR-2020	SDR-2025
Drum Diameter (mm)	750	850	850
Drum Depth (mm)	680	710	800
Volume (L)	300	400	453
Volume Load Ratio	20	20	18
Main Motor Power (KW)	0.37	0.37	0.75
Fan Motor Power (KW)	0.37	0.37	0.55
Rated Voltage (v)	380	380	380
Heater Power (KW)	13.5	18	22.5
Steam Pressure (MPa)	0.6	0.6	0.6
Width (mm)	850	890	890
Depth (mm)	1140	1210	1300
Height (mm)	1580	1775	1805
Weight (KG)	250	250	500