

→ Handheld Laser Welding Machine



Laser equipment solution provider



AJ-L1500W-RH

High precision laser welding, small heat affected area, no distortion of sheets

Welding energy can be precisely controlled, the weld seam is beautiful, no grinding process is required

Low cost of use, low loss of consumables, high percent of welding pass rate, simple maintenance

High welding efficiency, 5 to 10 times faster than traditional argon arc welding

Can be welded at normal temperature or under special conditions, high electro-optical conversion rate energy-saving and power-saving

→ WORKING PROCEDURE



Laser equipment solution provider

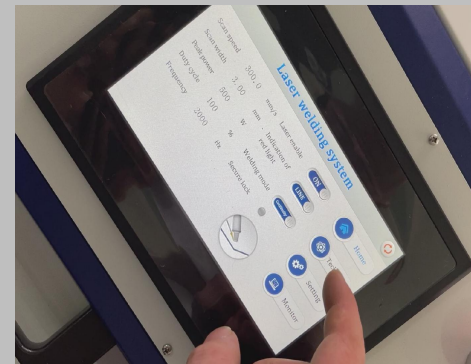
- ◆ The equipment adopts touch-screen control panel, it is convenient to modify the process parameters, easy to learn and easy to use, low dependence on the traditional welding experience, no need to be licensed to work.
- ◆ Ergonomically designed handheld laser welding head with optional elastic weight reducer to reduce the weight of the welding head during operation, lightweight and practical.
- ◆ Mainly used for aluminium, iron, stainless steel, copper and other metal pieces of the same material welding, as well as mixed welding for aluminium and copper, stainless steel and copper and other materials.



1. Connect protective gas



2. Fill with purified water



3. Set operating parameters



4. Start welding

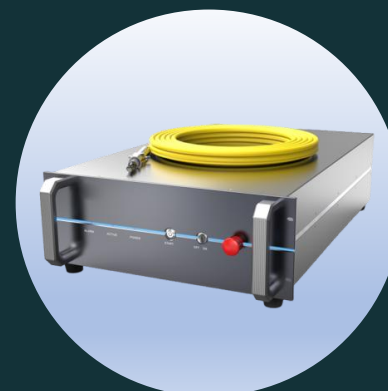
→ MACHINE DETAILS



Laser equipment solution provider



Laser Welding Gun



Laser Source



Industrial Water Chiller



Touching Screen



→ MACHINE PARAMETERS



Laser equipment solution provider

Machine Model	AJ-L3000W-RH	Control Software	Touch Screen
Laser Type	CW Fiber Laser	Working Mode	Continuous Welding
Laser Source	Everfoton	Welding Gun	SUP 23T (Chao Qiang)
Laser Power	3000W	Wire Feeder	SUP-AMF-A (Chao Qiang)
Beam Diameter	0.8~8mm	Welding Depth	Around 5mm(Depending materials and welding speed)
Protective Gas	Air/Argon/Nitrogen/Co2	Assisted Positioning system	Red light
Fiber Wire Length	Standard 9 Meters	Power Supply Required	AC220V±5% 50Hz/60Hz 1Phase
Wire Feeder	Support Wire Φ0.8/1.0/1.2/1.6	Machine Dimension	1450*700*1250mm
Cooling System	SCH-2000H (HanLi) Industrial Water Chiller	Net Weight	180KG
Total Power	8KW	Accessories	Wire Feeder, Nozzle, Tool box etc.



→ WELING EFFECT



Laser equipment solution provider

