

Do the machine with heart
Get the world's sight
—— ChengXi ong

Factory:NO.16, NORTH JIEFANG ROAD,WUXI,JIANGSU,CHINA

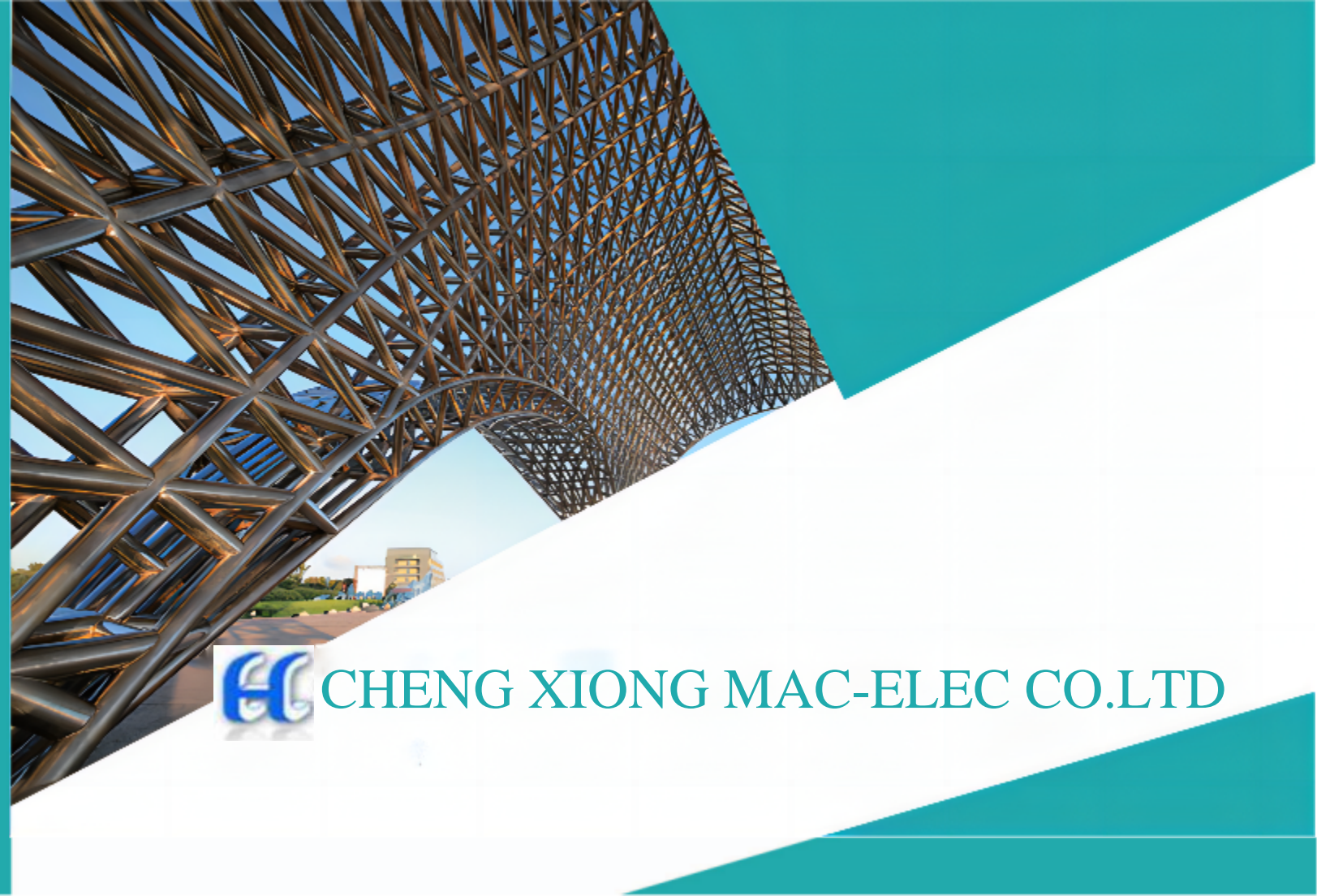
Telephone:0086-510-82761963

Email:gang.chen@chenghsiung.com

International websites:www.chenghsiung
.com



CHENG XIONG MAC-ELEC CO.LTD





SALES IN MORE THAN
160 COUNTRIES



WE OWN THE CORE TECH

HONOR OF QUALIFICATION

Cheng Xiong has a forward-looking visual subversion of traditional crafts, innovative core technology, more than a dozen utility models and invention patents and has obtained the "double soft enterprise" certification. The company strictly follows the ISO9001 international quality management system and provides the world's metal pipe profile manufacturing enterprises with integrated solutions for cutting

Municipal science and technology center

High-tech enterprise

Double soft enterprise



Utility model invention patent



1

H Beam Vertical Assembly Welding
01 Straightening Production Line

03 H Beam Assembly Machine
04 H Beam Horizontal Assembly Machine
05 H Beam Gantry Welding Machine
06 H Beam Straightening Machine (Hydraulic Type)
07 H Beam Straightening Machine (Hydraulic Horizontal)
08 H Beam CNC assembly Welding Straightening Machine

2

09 Multi-Channel Horizontal
Welding Production Line

3

H Beam Secondary Processing
Production Line

11 Intelligent H Beam Cutting Machine
12 Intelligent H Beam Laser Cutting Machine
13 Profile Processing Center

4

14 Robot Welding Line

5

15 Intelligent Steel Spraying Line

6

Stadium Steel Structure And Pipe Production Line

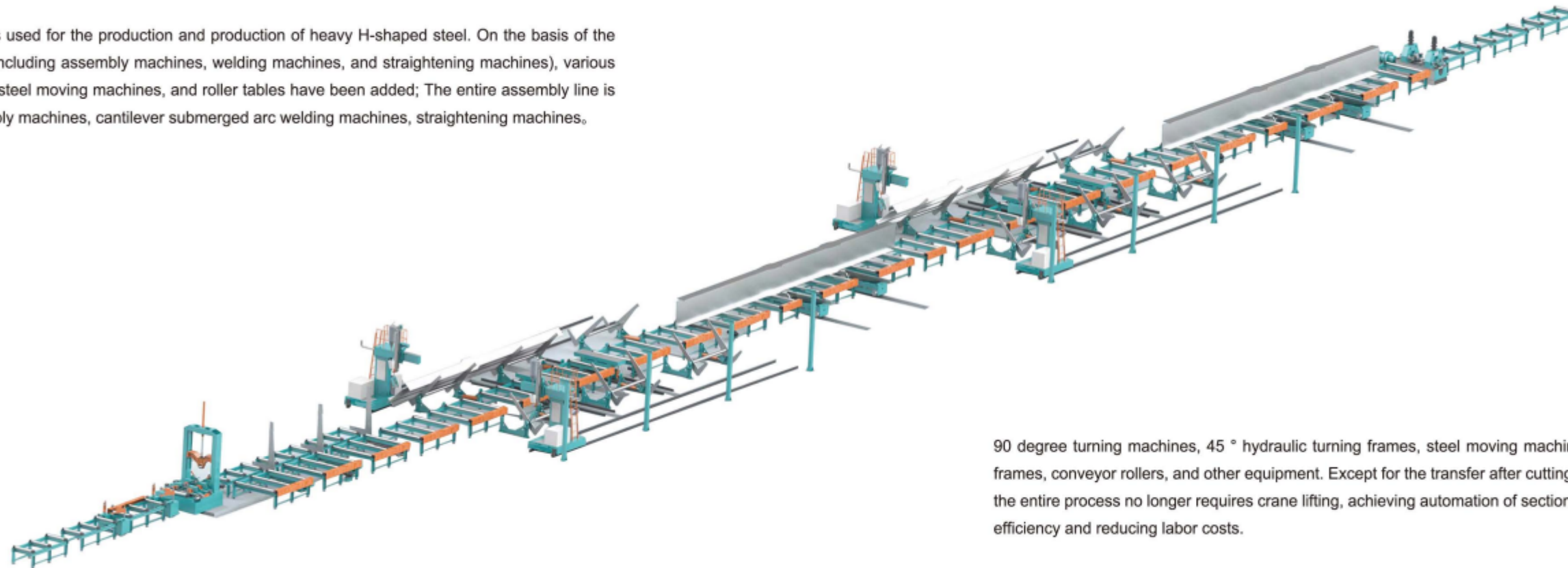
17 Intelligent Laser Pipe profile Cutting Machine
18 Round Pipe CNC Cutting Machine
19 Tube Pipe Grooving Cutting Robot
20 Roller Bed Pipe Cutting Beveling Machine

CONTENTS

H Beam Vertical Assembly Welding Straightening Production Line



This production line is used for the production and production of heavy H-shaped steel. On the basis of the semi-automatic line (including assembly machines, welding machines, and straightening machines), various overturning brackets, steel moving machines, and roller tables have been added; The entire assembly line is equipped with assembly machines, cantilever submerged arc welding machines, straightening machines,

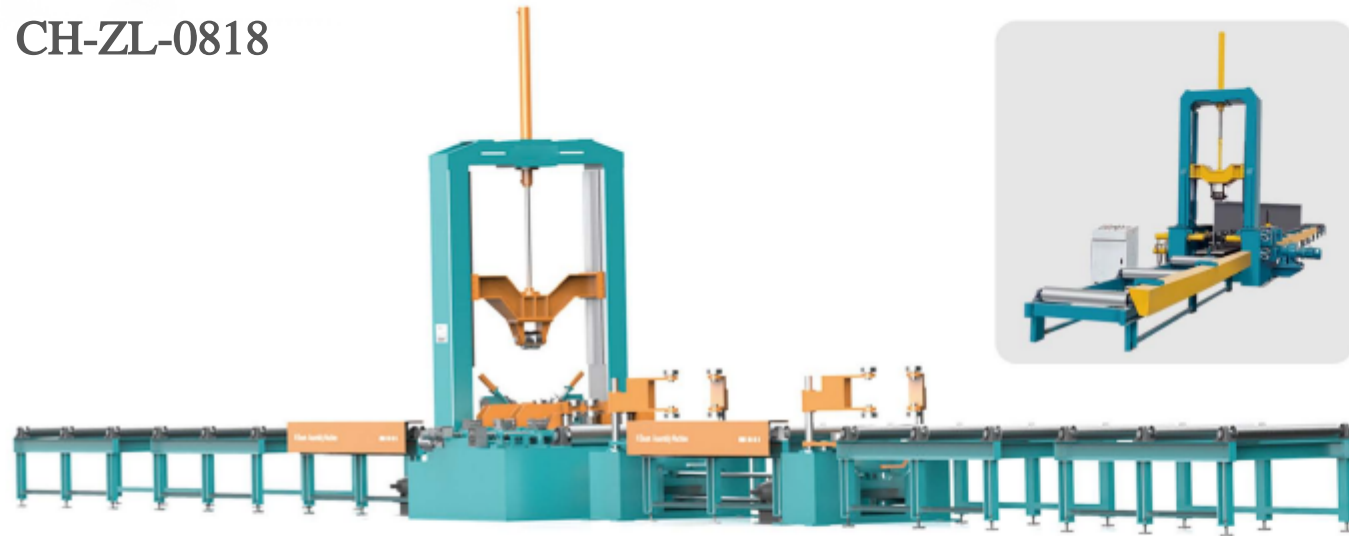


90 degree turning machines, 45 ° hydraulic turning frames, steel moving machines, 180 ° mobile hydraulic turning frames, conveyor rollers, and other equipment. Except for the transfer after cutting, cutting, and wing plate correction, the entire process no longer requires crane lifting, achieving automation of section steel production, greatly improving efficiency and reducing labor costs.



H Beam Assembly Machine

CH-ZL-0818

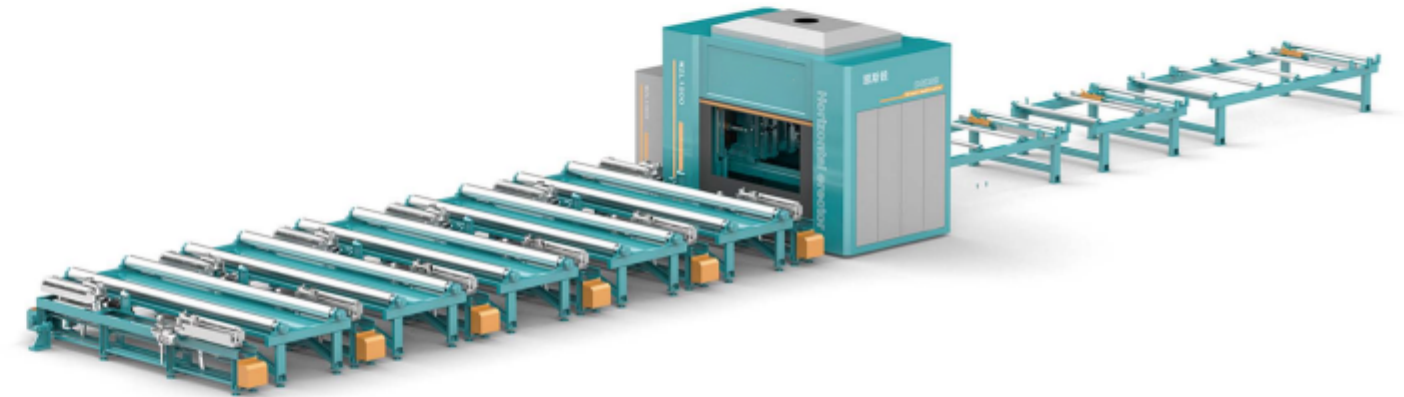


Technical Parameters

Model	ZL-0818	ZL-1020
Web height	200-1800mm	200-2000mm
Web thickness	6-32mm	6-60mm
Flange width	200-800mm	200-1000mm
Flange thickness	6-40mm	6-80mm
Workpiece length	500-6500mm/min	4000-15000mm/min
Power	8.4kW(Unincluding 2 sets welders)	15kW(Unincluding 2 sets welders)

H Beam Horizontal Assembly Machine

CH-WZL



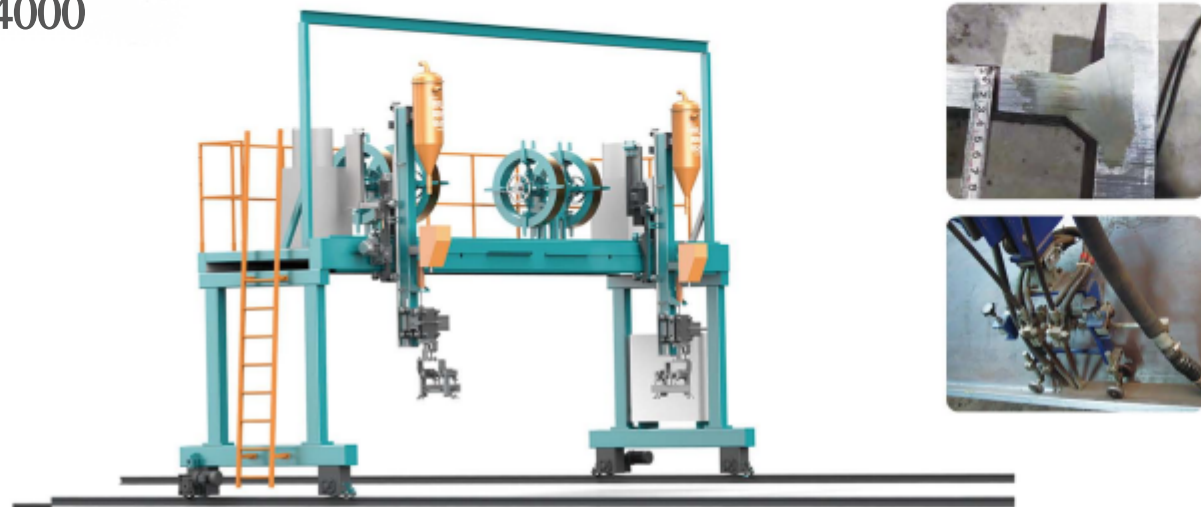
Technical Parameters

Workpiece material	≤ Q355	Workpiece length	5000-15000mm
Flange width	140-800mm	Workpiece conveying speed	8700mm/min
Flange thickness	8-40mm	Straightening speed	150-1500mm/min
Web height	350-1500mm	Machine size	35000×10000×4000mm
Web thickness	6-40mm		



H Beam Gantry Welding Machine

CH-MH-4000



Technical Parameters

Model	MH4000	MH5000
Flange width	200-800mm	200-800mm
Web height	200-1500mm	200-1800mm
Rails distance	4000mm	5000mm
Welding position	Fillet welding in the downhand/ flat position	Fillet welding in the downhand/ flat position
Driver	Bilateral	Bilateral
Rails length	18000mm(Customer supply)	18000mm(Customer supply)
Power	12.7kW Unincluding welder power source	12.7kW Unincluding welder power source

H Beam Straightening Machine(Hydraulic Type)

CH-HYJ-40/60/80



Technical Parameters

Flange width	200-800mm
Flange thickness	6-40mm 6-60mm 6-80mm
Web min. height	200mm
Straighting speed	4.8m/min
Total power supply	30kW



H Beam Straightening Machine (Hydraulic Horizontal)

CH-WYJ-40/60

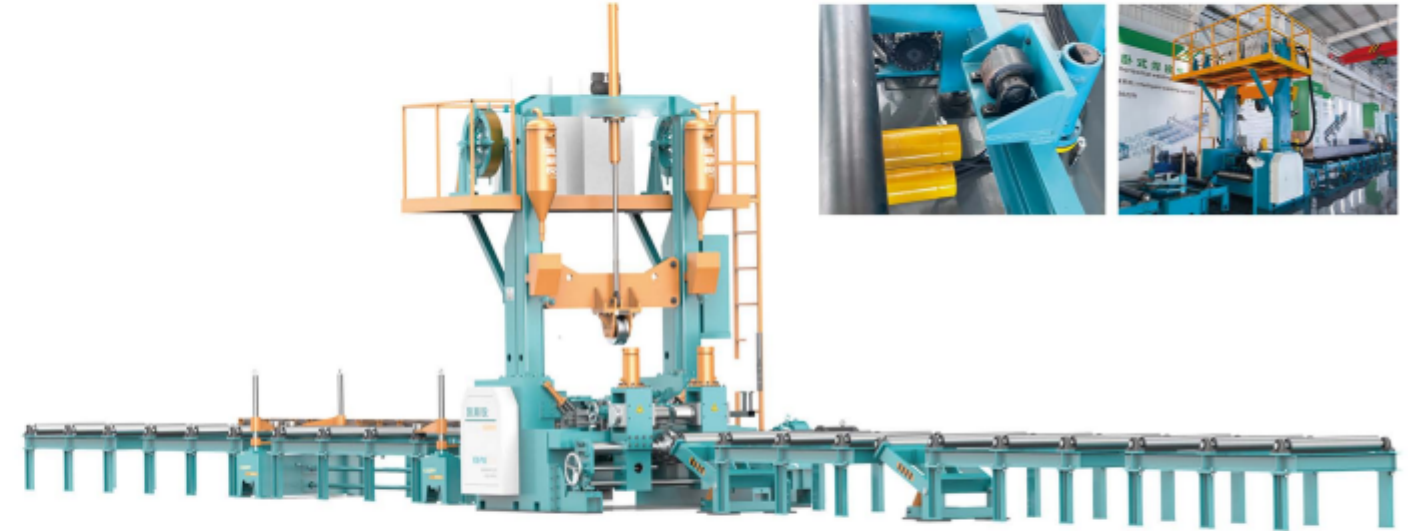


Technical Parameters

Workpiece material	≤Q355	Flange width	200-800
Flange width	200-800mm	Web height	2000
Flange thickness	6-40mm 6-60mm	Hidraulic system the max. pressure	30Mpa
Web min. height	300mm	Conveyor roller motor power	4kW×2
Straightening speed	≈4500mm/min	Total power	40kW

H Beam CNC Assembly Welding Straightening Machine

CH-PHJ-0618



Technical Parameters

Workpiece height	150-1800mm	Workpiece length	4000-15000m
Web thickness	6-20mm	Conveying speed of the workpiece	6000mm/min
Flange width	150-600mm	Welding speed	150-1500mm/min
Flange thickness	6-25mm	Welding process	Single arc single wire, Double arc double wire, Single arc double wire
Controllable deformation thickness	the max. 40mm		

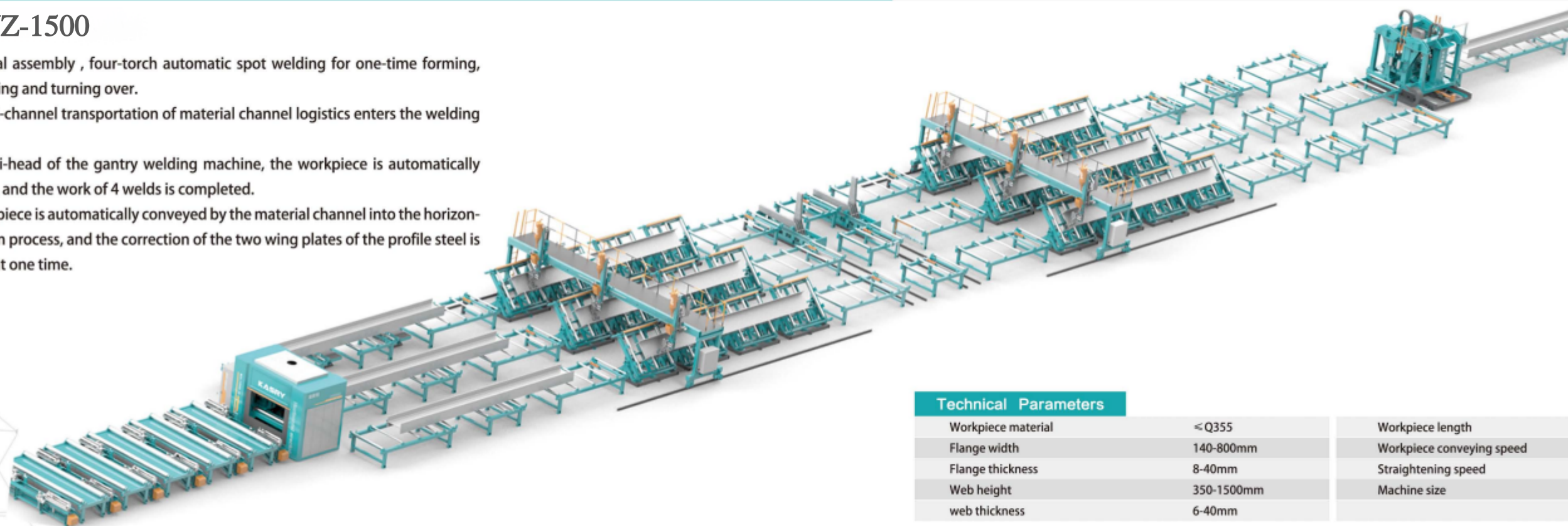


Multi-Channel Horizontal Welding Production Line



CH-WZ-1500

- ★ Horizontal assembly , four-torch automatic spot welding for one-time forming, avoiding lifting and turning over.
- ★ The multi-channel transportation of material channel logistics enters the welding station.
- ★ The multi-head of the gantry welding machine, the workpiece is automatically turned over, and the work of 4 welds is completed.
- ★ The workpiece is automatically conveyed by the material channel into the horizontal correction process, and the correction of the two wing plates of the profile steel is completed at one time.



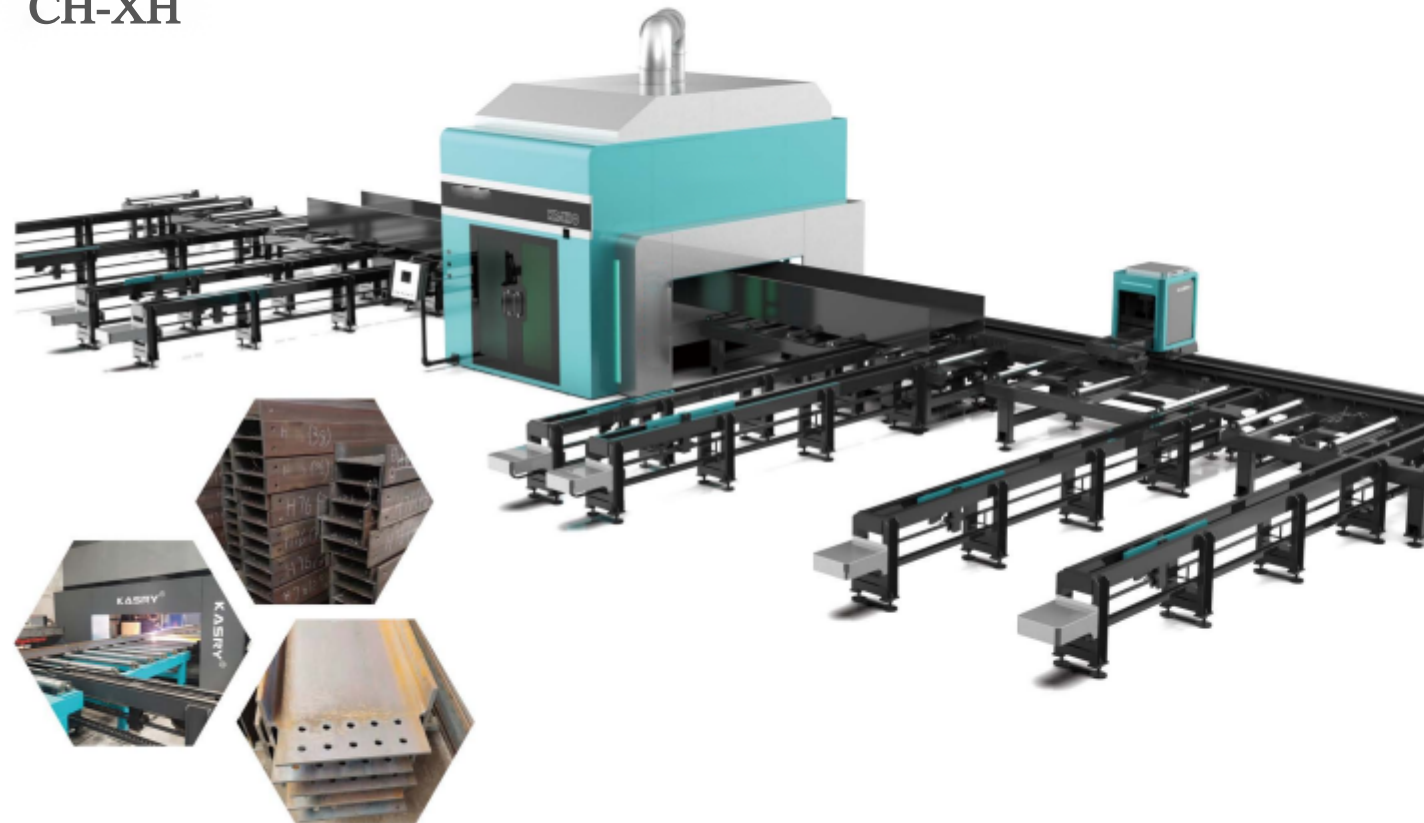
Technical Parameters

Workpiece material	≤ Q355	Workpiece length	5000-15000mm
Flange width	140-800mm	Workpiece conveying speed	8700mm/min
Flange thickness	8-40mm	Straightening speed	150-1500mm/min
Web height	350-1500mm	Machine size	120000×10000×4000mm
web thickness	6-40mm		



Intelligent H Beam Cutting Station

CH-XH



Intelligent H Beam Laser Cutting Machine

CH-XHJG-600/1000/1250



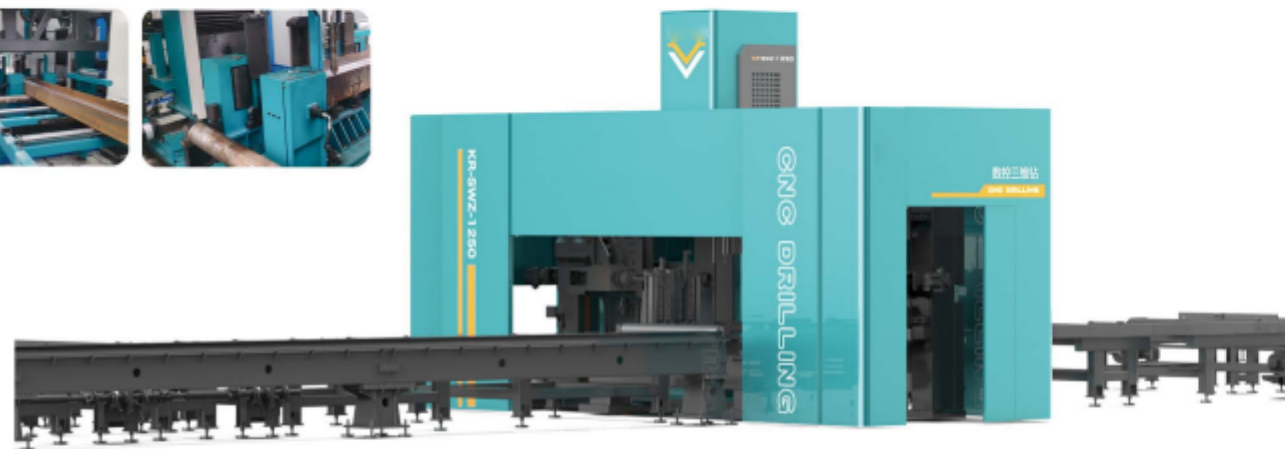
Technical Parameters

Models		600	1000	1250	repeatability	0.05mm
Effective cutting Size	Flange width	100-300mm	100-500mm	00-600mm	Maximum idle running speed	40m/min
	web width	100-600mm	100-1000mm	100-1250mm	Blanking length	3000mm-12000mm
Maximum section steel length		12000mm			Powersupply	6000W-12000W
Maximum mass of a single section steel		6000kg			Machine size	30000×10000×5000mm
positioning accuracy		0.05mm/m				



Cold Processing / Profile Processing Center

CH-SKJ-1050/1250



Technical Parameters

Processing Range	Flange width	100-600mm
	web width	100-1250mm
Drilling unit	Vertical drilling unit (Y-axis)	1 piece
	Horizontal drilling unit (Z axis + W axis)	2 piece
	Drilling diameter	6.8 - 40mm
	Drill shaft speed at maximum frequency	3500rpm
	Automatic tool change Number of magazines	36pieces
Weight	The machine without accessories weight approximately	14000kg
Machine size	L x W x H	6560×2100 × 4090mm
Can drill holes in special wide I-beams and welded I-beams, as long as the stiffness and stability of the profiles meet the steel structural profile standards included in the DIN standard.		

Robot Welding Line

Flexible deployment

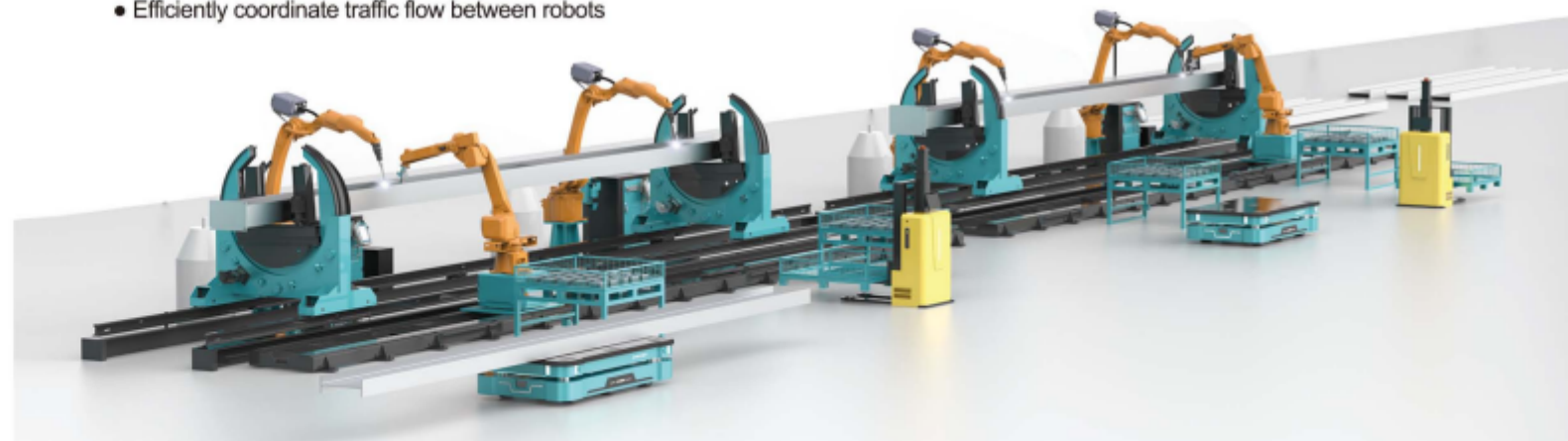
- Open platform, easy to customize with different top modules
- Can use third-party out-of-the-box solutions in MiR or MiRGo

Efficient

- Ability to navigate and drive in highly dynamic environments
- The most efficient path can be selected, and the alternate path will be automatically selected when necessary
- Supports multiple pickup and delivery points

Scalable

- Rapid and central configuration of robot fleets via MiR Fleet
- New robots can be easily added to the fleet through shared data between robots
- Efficiently coordinate traffic flow between robots



Intelligent Steel Spraying Line

CH-PT-3070



Technical Parameters

Chamber entrance size	1000×3900mm	Exhaust dust emission	<2mg/min
Effective processing range	700×3000mm	Paint average passing speed	0.6-3m/min
Number of torches for single spray system	6+6	Paint type	Water based/oil based paint
Filtration system capacity	2000m³/h	Table height	560mm

Technical Parameters

Electrical system	Total power	60kW	Transmission min.length	3000mm
	Voltage	380V	Transmission max.weight	500kg/m
Air supply system	Air supply power	200kW	Machine size Spray unit	3100×7200×5500mm
	Working pressure	0.65-1Mpa		



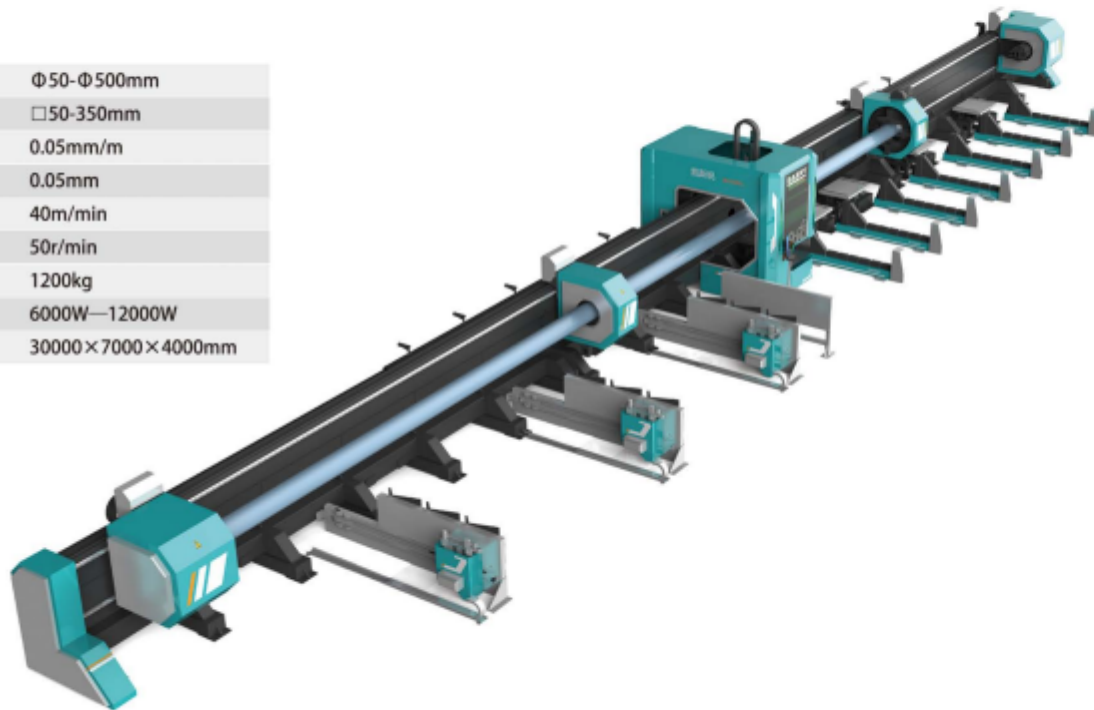
Stadium steel structure and pipe production line

CH-LT-12050

Intelligent Laser Pipe Profile Cutting Machine

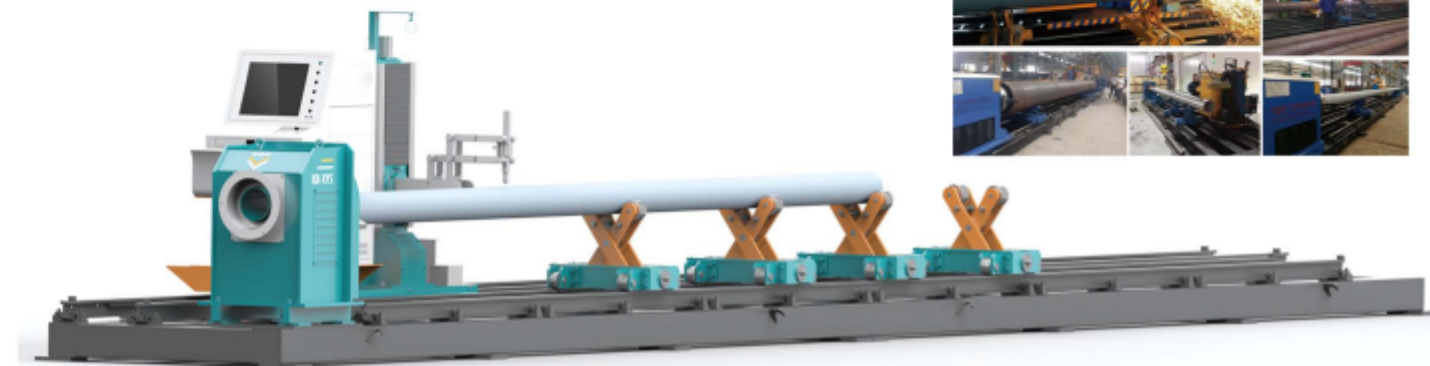
Technical Parameters

Processing range	Φ50-Φ500mm □50-350mm
Positioning accuracy	0.05mm/m
Repeatability	0.05mm
Maximum idle running speed	40m/min
Maximum idle speed	50r/min
Maximum weight of a single pipe	1200kg
Power range	6000W—12000W
Machine size	30000×7000×4000mm



Round Pipe CNC Cutting Machine

CH-XY5-800



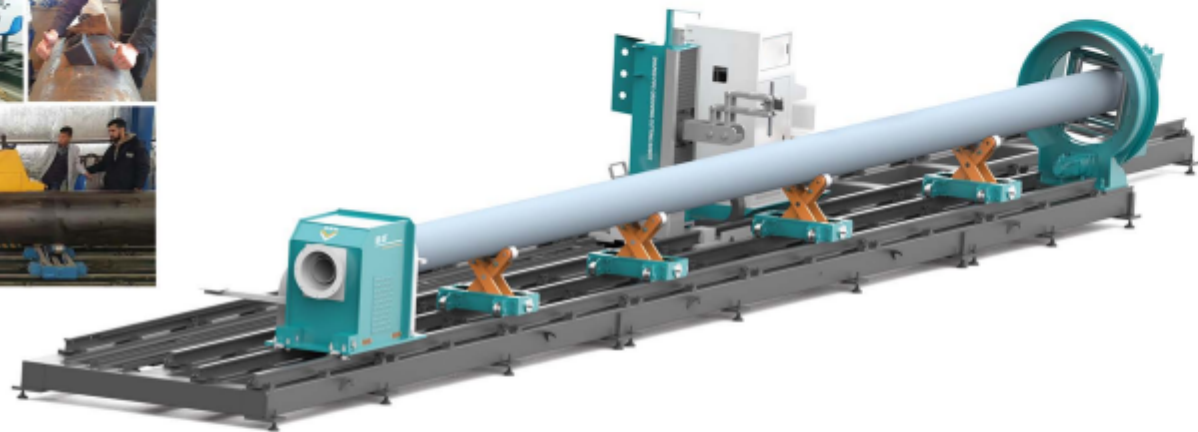
Technical Parameters

Round pipe diameter	50~630mm 60~800mm	The axial swing angle of the cutting torch	$\alpha = \pm 60^\circ$
Cutting length	6000mm 9000mm 12000mm	The radial swing angle of cutting torch	$\beta = \pm 55^\circ$
Cutting mode	Plasma and flame(oxy-fuel)	Cutting length accuracy	$\pm 1.5\text{mm}$
Control system	Advantech IPC with Kasry PIP	Oblique crossing angel	$15^\circ \sim 170^\circ$
Programming software	Curve library, Tekla, AutoCAD	Angle error	$\pm 1^\circ$
Driving system	Japan Panasonic servo motor	Bevel angle	plasma $\leq \pm 45^\circ$ flame $\leq \pm 60^\circ$
Cutting speed	10~2000mm/min	Standard for execution of cutting precision	ISO9013-2002 ISO8206-1991
Travelling speed	10~6000 mm/min		and JB/T10045.4-1999JB



Tube Pipe Grooving Cutting Robot

CH-XF



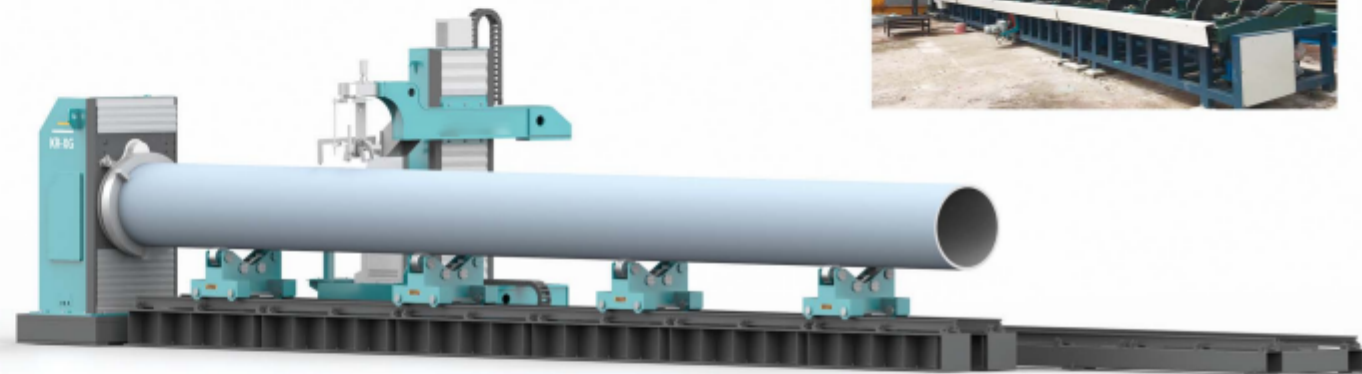
Technical Parameters

Round pipe diameter	50~630mm 60~800mm	The axial swing angle of the cutting torch	$\alpha = \pm 60^\circ$
Cutting length	6000mm 9000mm 12000mm	The radial swing angle of cutting torch	$\beta = \pm 55^\circ$
Cutting mode	Plasma and flame(oxy-fuel)	Cutting length accuracy	$\pm 1.5\text{mm}$
Control system	Advantech IPC with Kasry PIP	Oblique crossing angel	$15^\circ \sim 170^\circ$
Programming software	Curve library, Tekla, AutoCAD	Angle error	$\pm 1^\circ$
Driving system	Japan Panasonic Servo Motor	Bevel angle	plasma $\leq \pm 45^\circ$ flame $\leq \pm 60^\circ$
Cutting speed	10~2000mm/min	Standard for execution of cutting precision	ISO9013-2002 ISO8206-1991
Travelling speed	10~6000 mm/min		and JB/T10045.4-1999JB

Roller Bed Pipe Cutting Beveling Machine



CH-XGT-2000

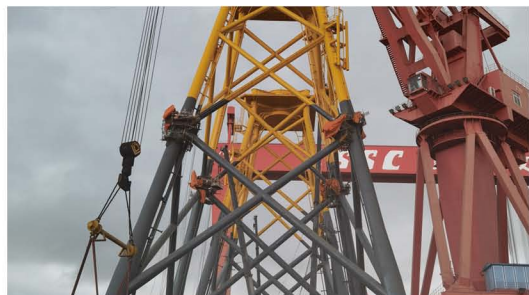


Technical Parameters

Round pipe diameter	219-1210 325—1620 630-2000	Control system	Advantech industrial computer
Cutting range	6, 9, 12m (length can be customized)	Plasma cutting speed	According to the selected plasma power
Machine size	7800*1800*2000	Plasma torch anti-collision protection system	Yes
Cutting method	Flame / plasma	Driving method	servo
Cutting thickness	Flame: 6-60mm Plasma cutting: According to the selected plasma power	Software	KASRY PIPE apply software
Flame cutting speed	20-700mm/min		

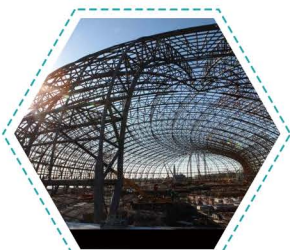


STEEL Construction Module



OFFSHORE WIND POWER STRUCTURE

- ✓ Offshore wind power jacket
- ✓ Wind power monopile
- ✓ Wind power single pile steel cage
- ✓ Large maintenance platform structure



SPECIAL-SHAPED STRUCTURE OF SPORTS VENUES

- ✓ Spatial Structure Stadium
- ✓ All kinds of special-shaped, bent and twisted steel structures



VARIOUS BRIDGE STRUCTURES

- ✓ Long-span suspension cable-stayed steel bridge
- ✓ Highway ramp bridge
- ✓ Steel arch bridge
- ✓ Steel structure pedestrian bridge



CONSTRUCTION STEEL STRUCTURE

- ✓ High-rise building steel piles, steel beams, trusses
- ✓ Steel structure of large convention and exhibition center



PRESSURE VESSEL PIPING

- ✓ Pressure vessel, reaction tank
- ✓ Various pressure pipes



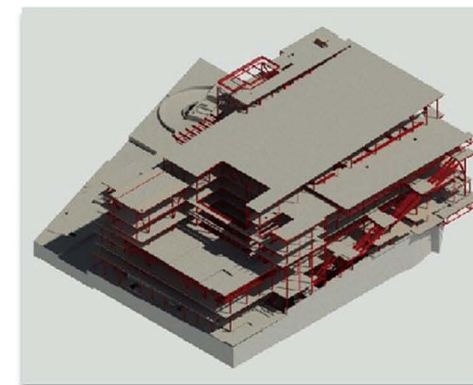
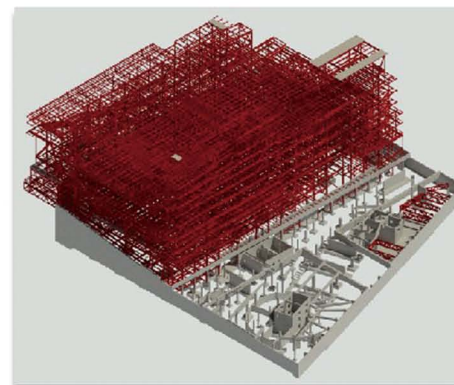
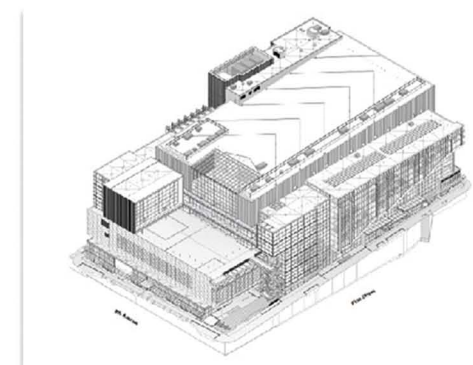
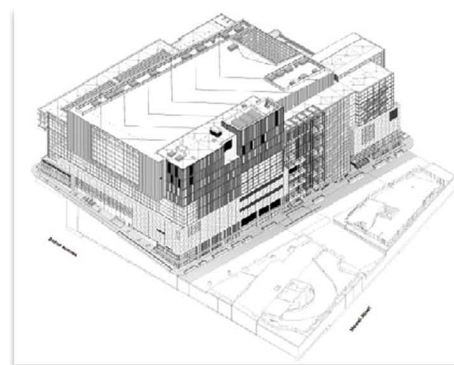
DECORATIVE CURTAIN WALL

- ✓ Curtain wall steel structure
- ✓ Landscape decoration steel structure

WSCCA PROJECT INTRODUCTION

Location: Seattle, USA

Owner: Washington State Legislature



Producer: ZMPC.

Work volume: about 19543 tons of steel structure. The whole building is divided into two underground floors and fourteen floors above ground, and the main steel structure is the above ground part.

Execution standard: AWS

Scope of work: material cutting, assembly, welding, pre-assembly, painting, finished product protection and packaging.

STEEL Construction Module

Offshore Wind Power Project

✓ Jacket loading



✓ Jacket mass production



✓ Steel cage production



✓ Production of booster station

Pressure Vessel Project



BYD Chongqing Rail Rubber Tire Tram Project

Install the web



Install transverse stiffeners



Install longitudinal stiffeners



Install type enhancement

