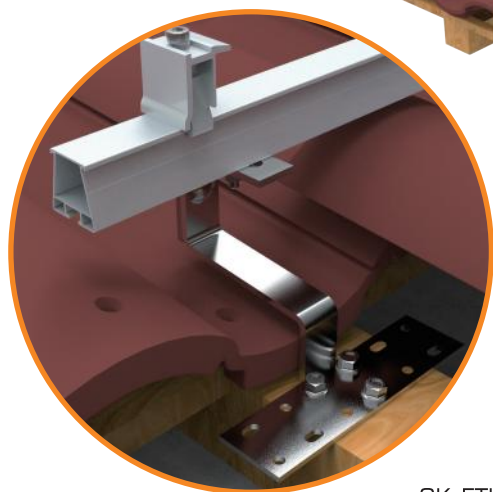
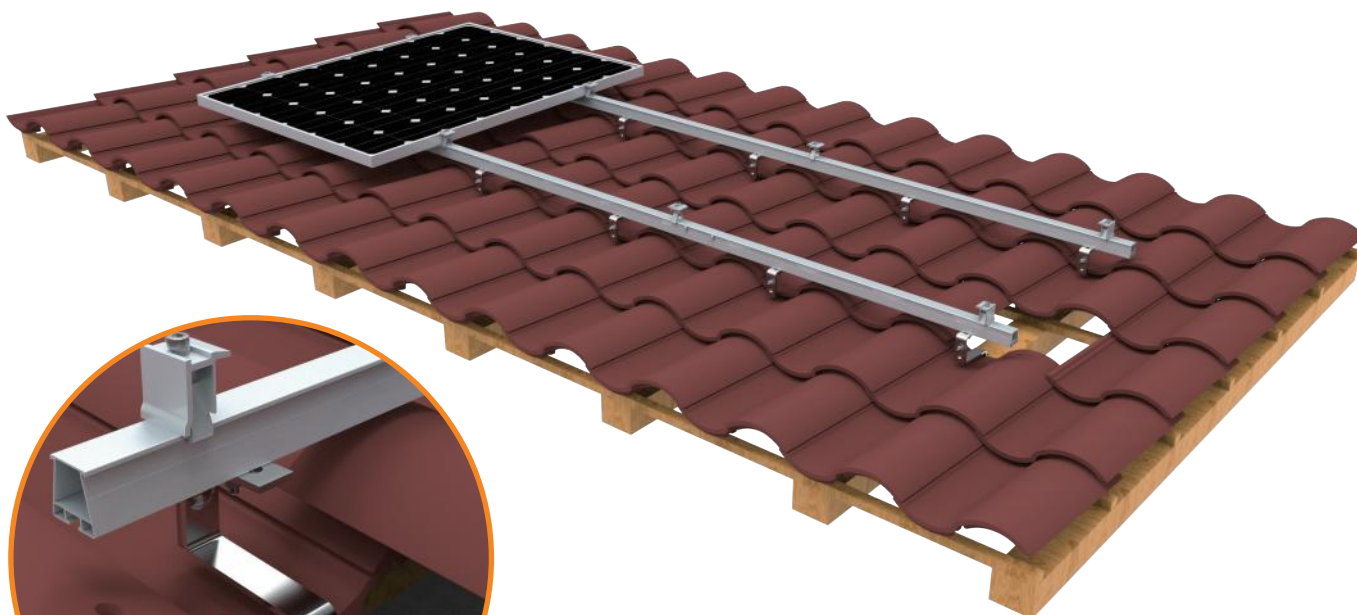




 **CHENXIONG MAC-ELEC CO.,LTD**

**Solar Mounting Solutions**  
**Mount Bracket**

### Pantile Mount Bottom Fixing



CK-FTH-073

#### Features/Benefits:

- Installed with most types tile roofs
- Portrait & Landscape orientation
- Pre-assembled
- Made of SUS 304
- Height adjustable
- Easy installation
- Firmly bottom fixing

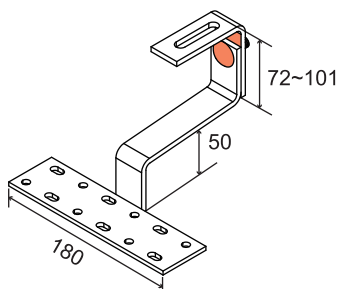


**Intertek**  
5010190  
Conforms to UL STD NO.1703 & 2703



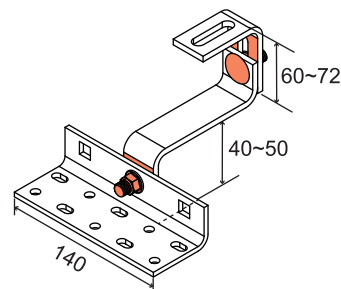
**Australian STANDARD**  
AS 1170

#### Height adjustable over tile



CK-FTH-073

#### Height adjustable from bottom

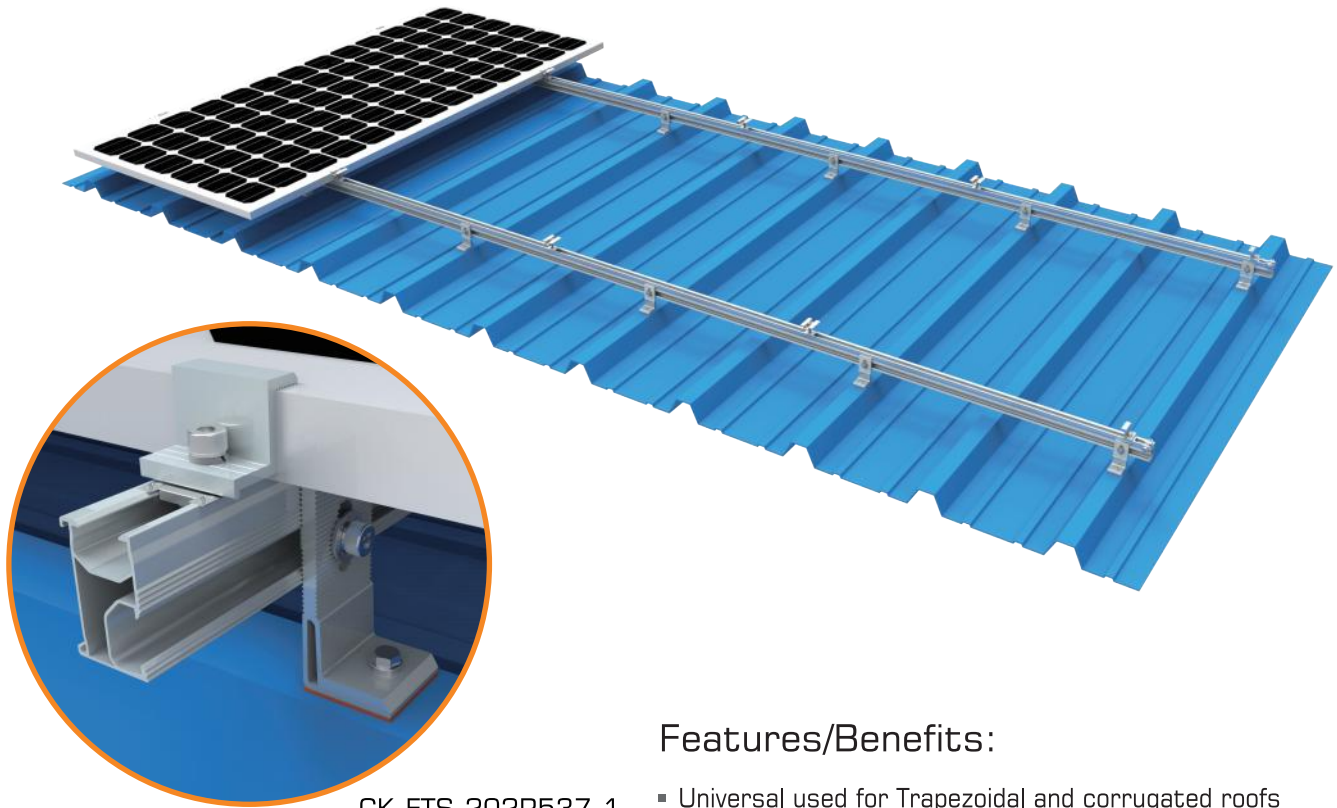


CK-FTH-09V

# METAL ROOF MOUNT BRACKET

## CHENGXIONG

### L Feet Mount



CK-FTS-202R537-1

#### Features/Benefits:

- Universal used for Trapezoidal and corrugated roofs
- Portrait or Landscape orientation
- Pre-assembled
- Made of high class material AL6005-T5
- Pre-Applied EPDM pad

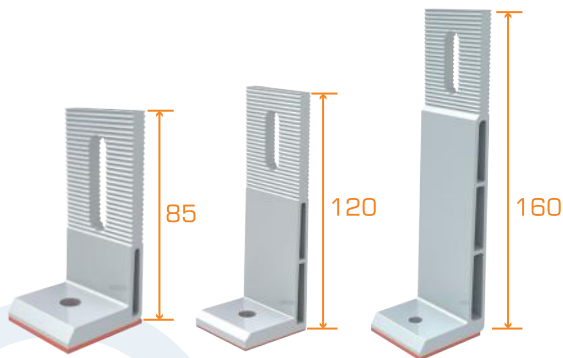


Intertek  
5010190  
Conforms to UL STD NO.1703&2703



Australian  
STANDARD  
AS 1170

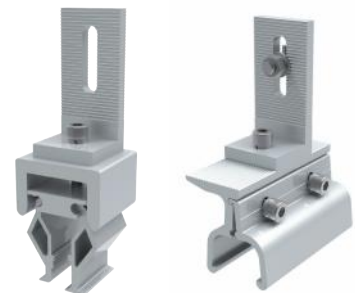
#### Length Options



#### Apply with Hanger Bolt



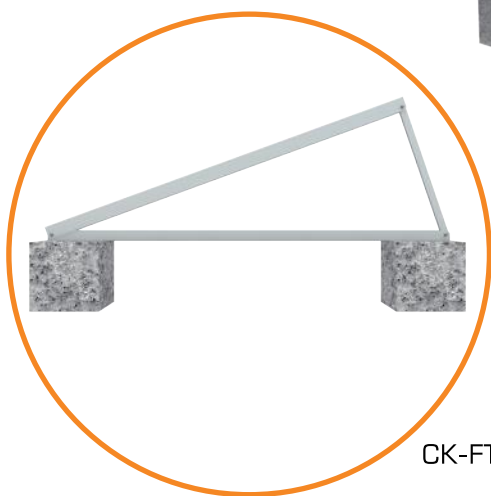
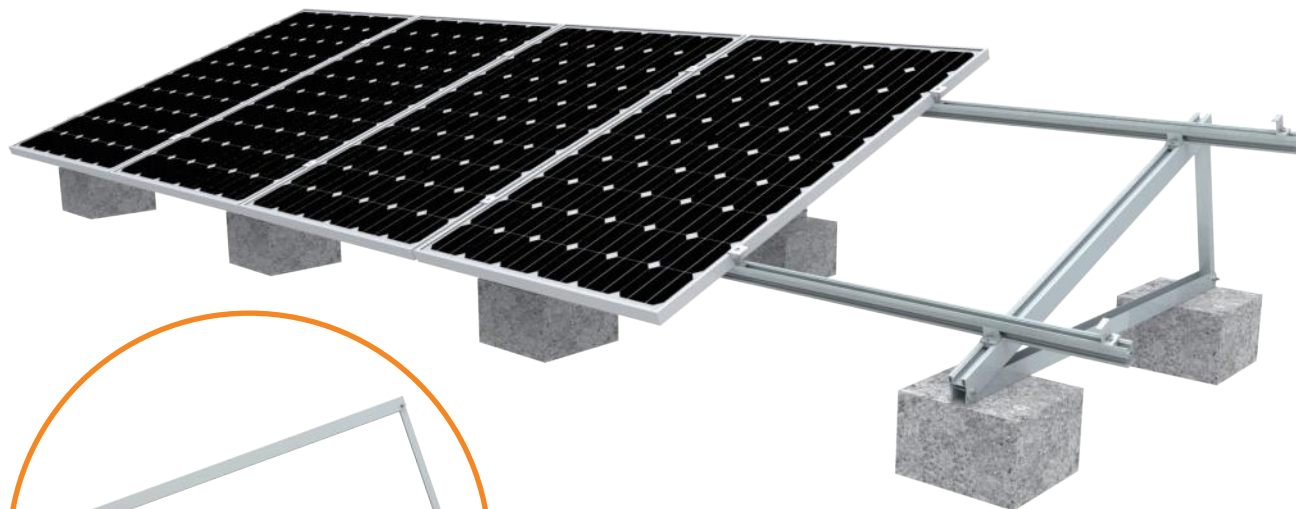
#### Work with roof clamps



# FLAT ROOF MOUNT BRACKET

CHENGXIONG

## Fixed Aluminum Alloy Triangular Mount



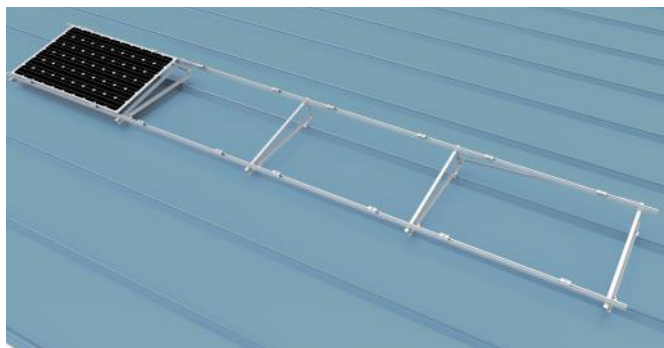
CK-FTT-BL



### Features/Benefits:

- Most universal for commercial flat roofs
- 1 panel Portrait orientation
- 10°, 15°, 20°, 25° tilted angle available
- Made of AL 6005-T5
- Highly class anodizing surface treatment
- Pre-assembly and foldable
- Non-penetration to roof with Lower cost

## Tilt Mount On Metal Sheet

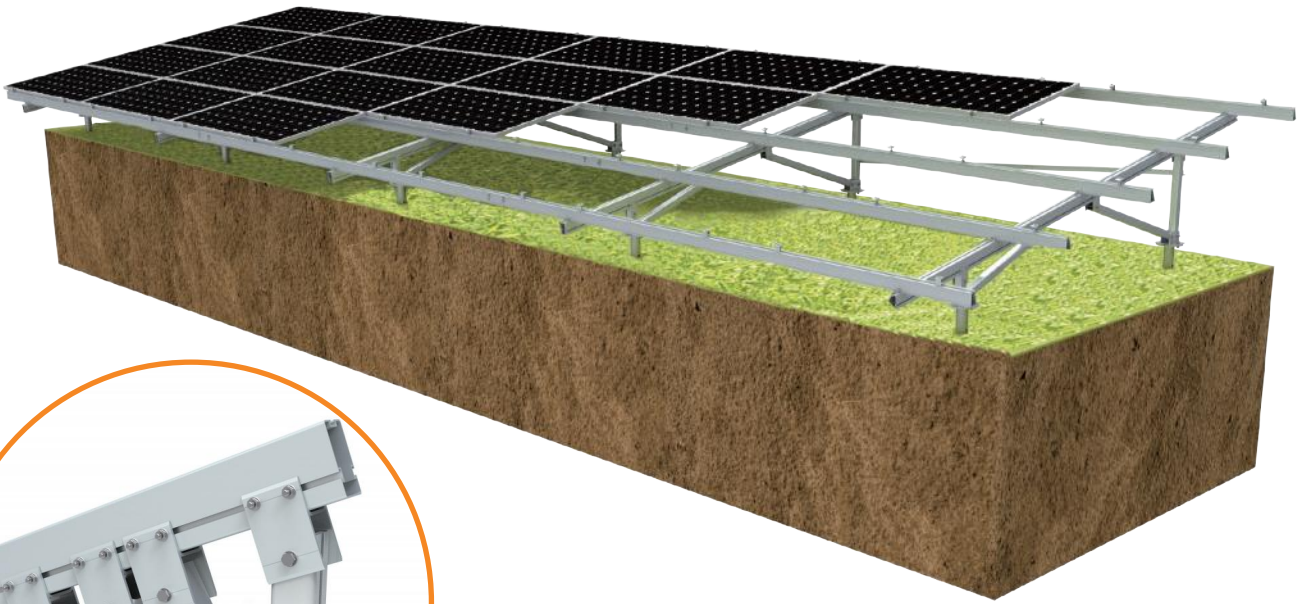




# GROUND MOUNT

## CHENGXIONG

### Aluminum Alloy T2VC Mount

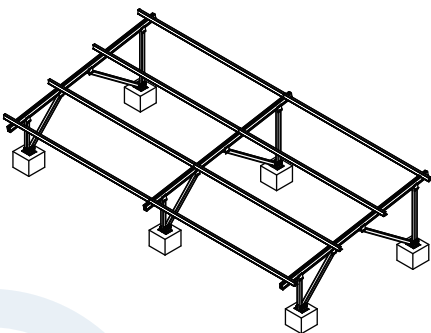


#### Features/Benefits:

- "V" support design, improve the stability
- Pre-assembly and foldable
- Portrait or Landscape orientation
- Made of AL6005-T5, Highly class anodizing
- Customized arrays and height are possible
- Foundation works with Concrete & Ground Screw & Anchor

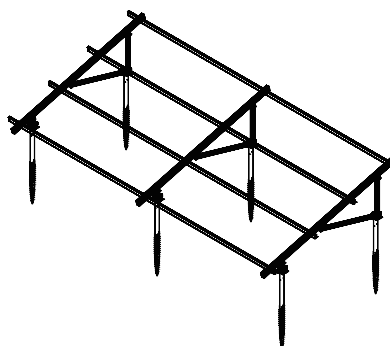


#### Foundation Applications



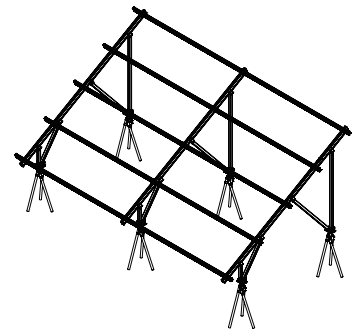
Concrete

I



Ground screw

II



Anchor

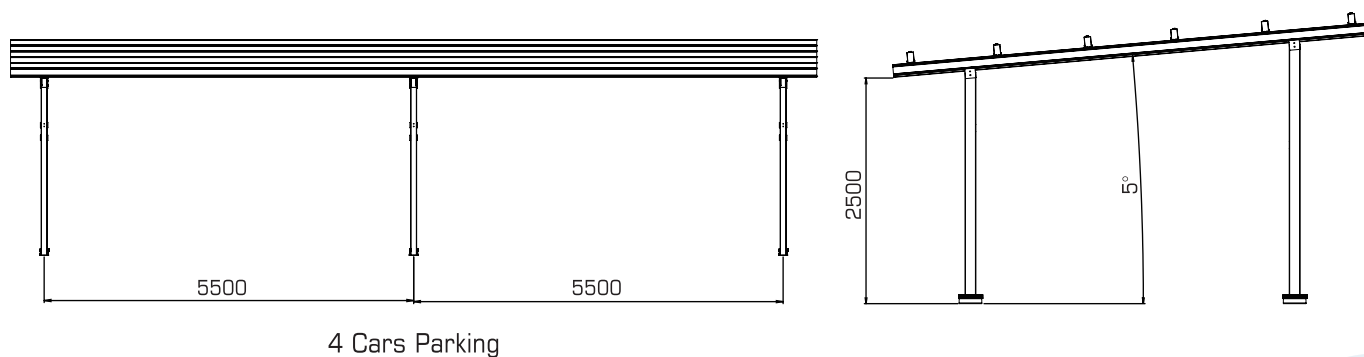
III

## Four Poles Carport

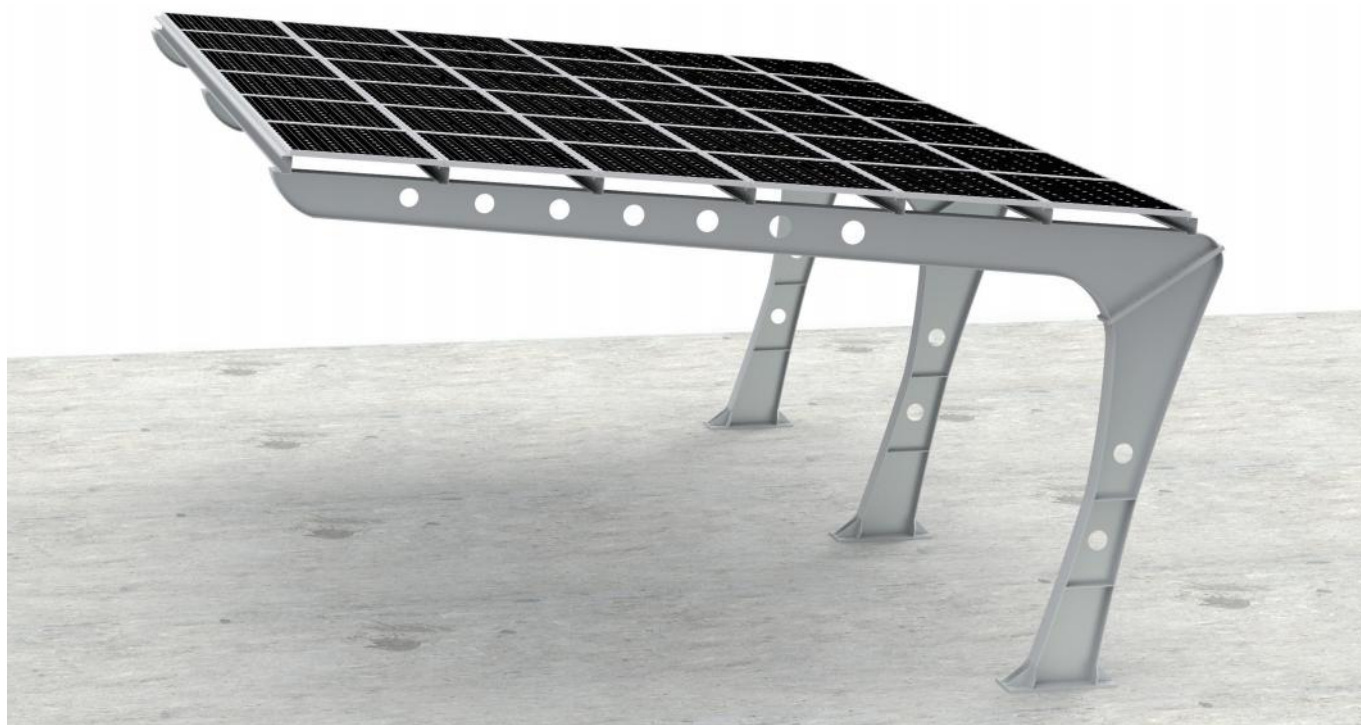


### Features/Benefits:

- Mostly used for home parking lots
- Four Poles, 2 cars parking
- Portrait or Landscape orientation
- Both aluminum and steel materials are available
- Effective and convenient on installation
- Water-proof option is provided
- Customized arrays and height are possible
- Strength calculation support

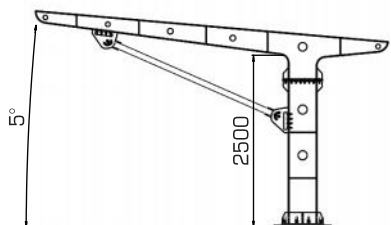


## Single Pole Carport

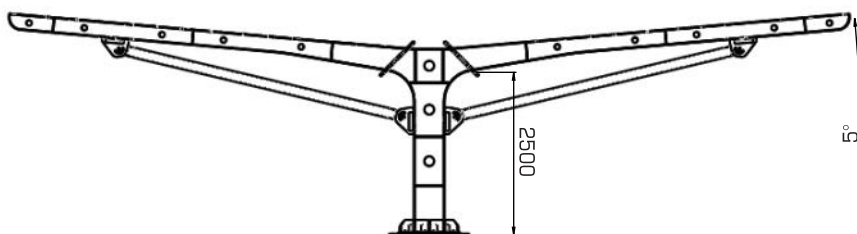


### Features/Benefits:

- Mostly used for commercial parking lots
- Single pole, No obstacles between cars
- Portrait or Landscape orientation
- Made of Q355B, Hot Dip galvanizing or painting
- Double sides parking is available
- Water-proof option is provided
- Customized arrays and height are possible
- Strength calculation support

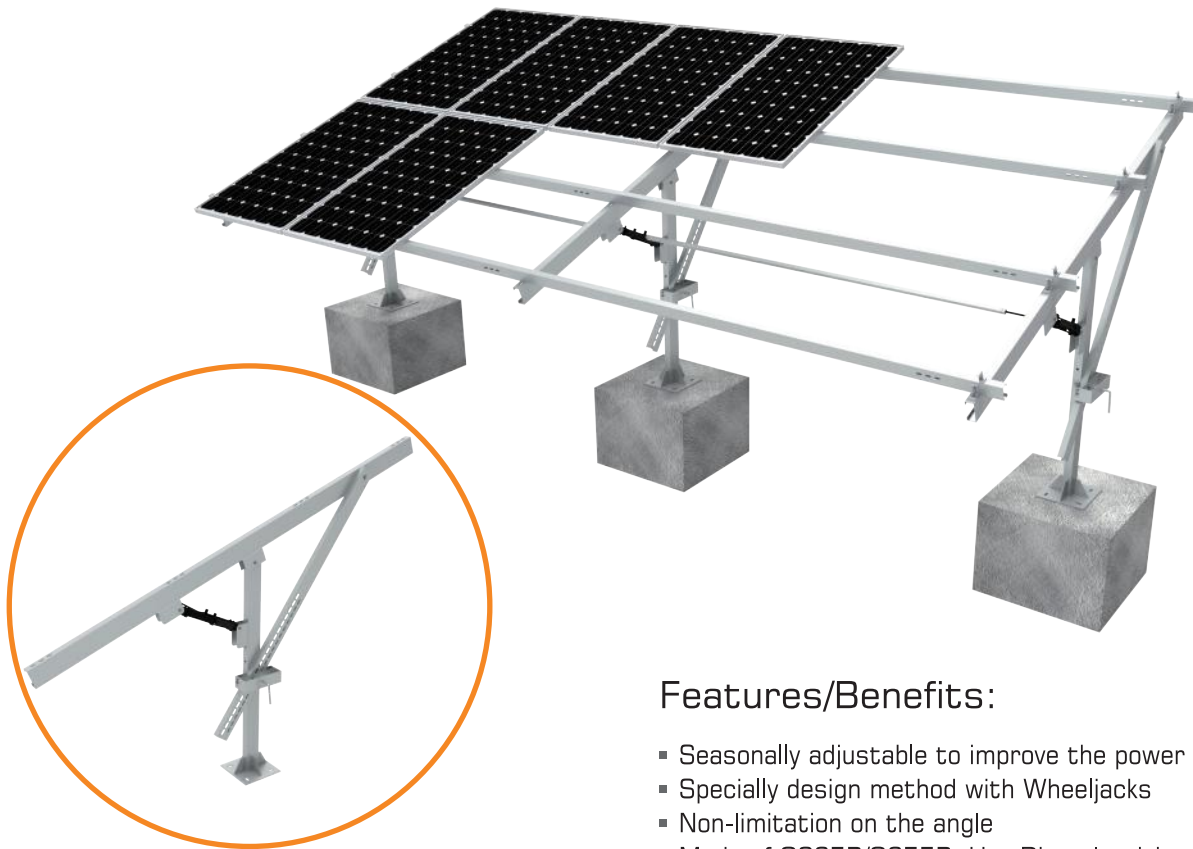


1 Side Parking



2 Sides Parking

## Adjustable Steel Ground Mount

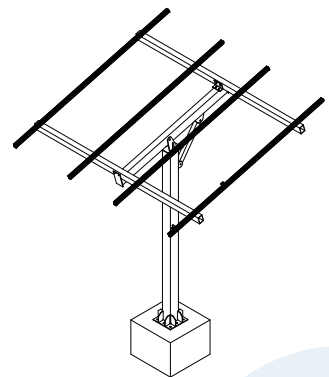
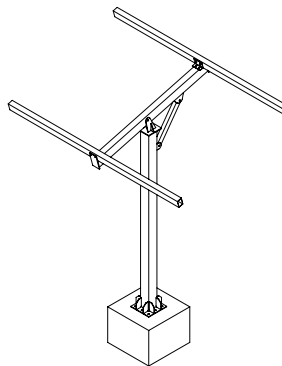
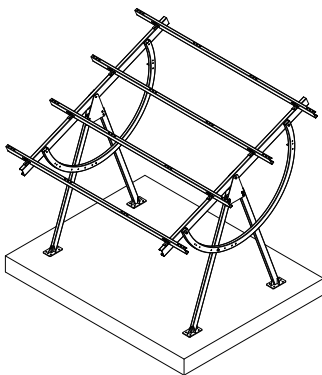


### Features/Benefits:

- Seasonally adjustable to improve the power output
- Specially design method with Wheeljacks
- Non-limitation on the angle
- Made of Q235B/Q355B, Hot Dip galvanizing
- Foundation works with both Concrete & Pile
- Enable the adjusting capacity 4MW/2persons per day



## Customized Design





# RESIDENTIAL ROOF

## CHENGXIONG



Project Size: 2KW Installation Site: USA



Project Size: 13KW Installation Site: USA



Project Size: 7KW Installation Site: USA



Project Size: 8KW Installation Site: Netherland



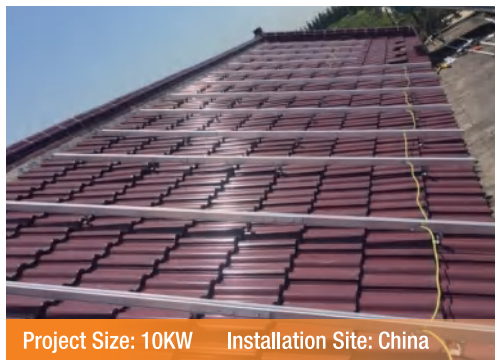
Project Size: 15KW Installation Site: Netherland



Project Size: 12KW Installation Site: Netherland



Project Size: 20KW Installation Site: China



Project Size: 10KW Installation Site: China



Project Size: 8KW Installation Site: China



# COMMERCIAL ROOF

## CHENGXIONG



Project Size: 3MW Installation Site: Australia



Project Size: 200KW Installation Site: USA



Project Size: 650KW Installation Site: UAE



Project Size: 1.5MW Installation Site: Pakistan



Project Size: 3MW Installation Site: China



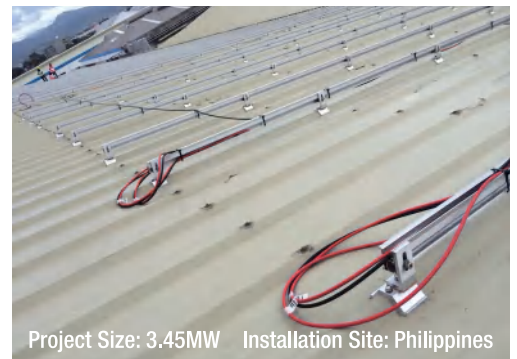
Project Size: 3MW Installation Site: Thailand



Project Size: 2MW Installation Site: Vietnam



Project Size: 2.1MW Installation Site: India



Project Size: 3.45MW Installation Site: Philippines



Project Size: 640KW Installation Site: Korea



Project Size: 500KW Installation Site: Japan



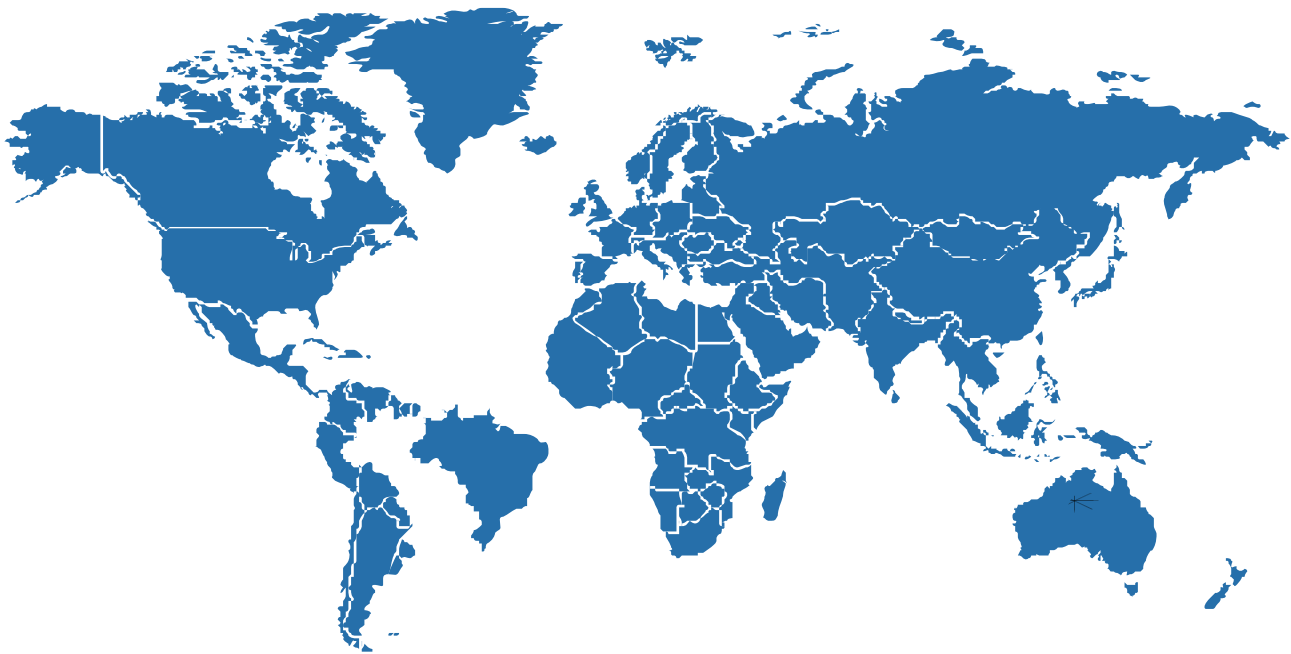
Project Size: 2.8MW Installation Site: China



## CHENGXIONG



# Lead Low Carbon Economy



**CHENXIONG MAC-ELEC CO., LTD.**

ADD : 11TH FLOOR, NO.16 JIEFANG NORTH ROAD, WUXI,P.R.CHINA

TEL : ( 86 ) 510-82761271, 82715410

FAX: ( 86 ) 510-82726695

E-mail:[info@chenghsiung.com](mailto:info@chenghsiung.com)